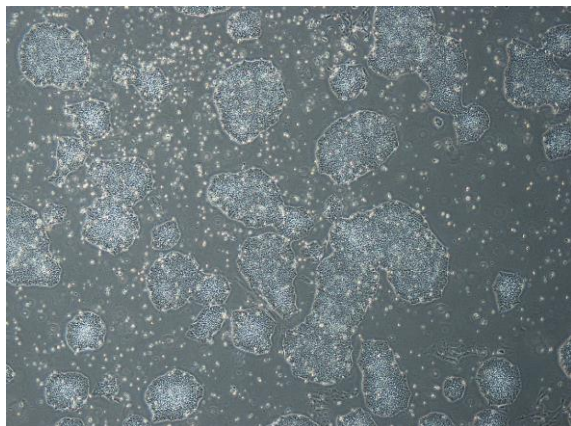


【 CiRA-j-1102 】 Morphology of iPSC colonies

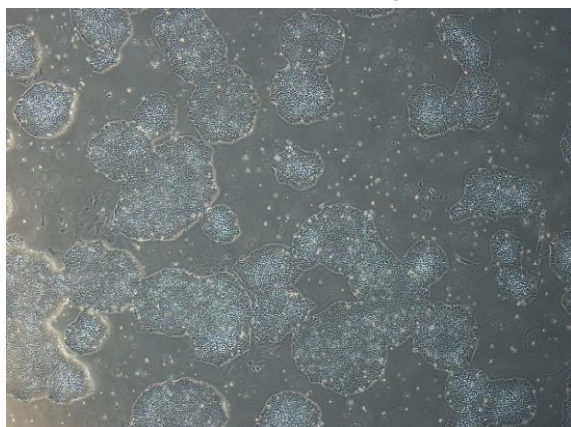
CiRA-j-1102-A: passage-2



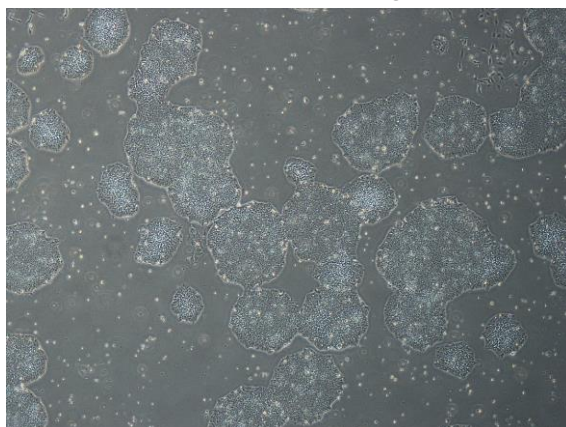
CiRA-j-1102-B: passage-2



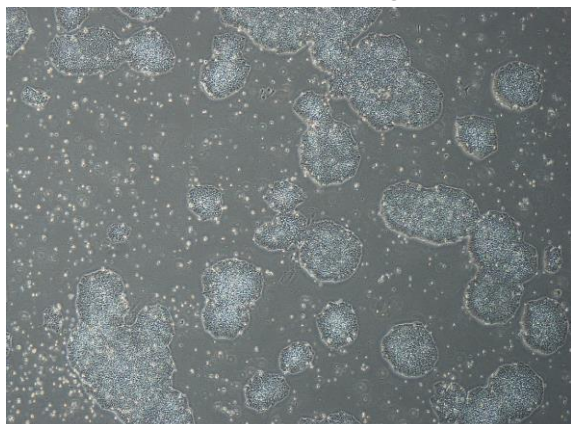
CiRA-j-1102-C: passage-2



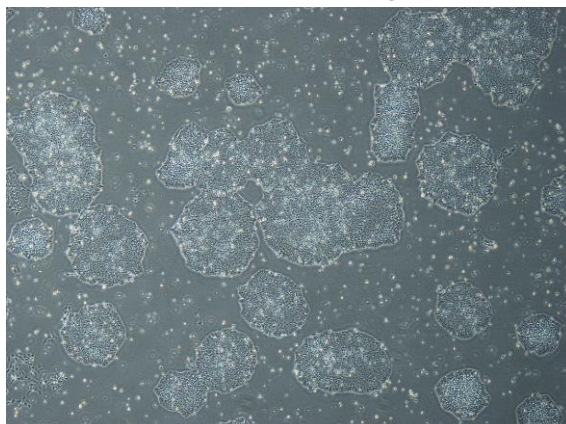
CiRA-j-1102-D: passage-2



CiRA-j-1102-E: passage-2



CiRA-j-1102-F: passage-2



(All images were captured at 4x magnification)